



GENERAL CATALOGUE

**MATERIALS  
FOR SMILES**





*"Chemistry is just like life;  
it is made up of formulas and experiments:  
to be successful you need to observe  
and experiment, taking chances".*

*Piero Maggior*

AD Techim Group s.r.l.

Back when everything began

1975

**TECHIM GROUP was born**, thanks to the initiative of a group of chemical engineers specialised in surface treatment of precious metals and with extensive experience in the metallurgical field.

At first, its sales marketing department was oriented towards the implementation of new and innovative products used by several companies from the goldsmith sector; but very short afterwards, in view of the validity of its products, it specialised in the field of dental products.

1985

**It started producing gypsum and dental investments**, which immediately led to a significant increase in the turnover and important collaborations, thus enabling the Company to expand the radius of sale beyond the Italian borders.

1994

With a significant investment, **the production of silicones**, for both the dental and the industrial fields, was developed.

1997

**TECHIM decided to get certified with the ISO 9001 and ISO 13485 Quality System**. All Techim products within the medical sector belong to classes I or IIa DIR.93/42/EEC, and those belonging to class IIa are certified by a notified body.

2005

Thanks to the network of relations that the Techim Team and its dealers have been able to manage over these years, not only products but also markets could be renewed. **Our 3,000 customers are often our commercial points of reference as well**: as a matter of fact, they are the ones who point us and direct us towards new and possible markets, confident in the quality assurance of our offer.

TODAY

**TECHIM GROUP is configured as a company destined** to satisfy the most generous and rewarding professional expectations within the field of the most ambitious dentistry-prosthodontics.

**In our new catalogue, you can find all the latest news** proposed according to the product family: a result, rather than a mere list of information, that TECHIM wants to share with all those who have made it possible thanks to their constant investment in research and development, guaranteeing state-of-the-art goals resulting from taking chances and experimenting, two ingredients that have turned the Techim Formula into a winning product.

**And the story continues.**

*Packaging may be subject  
to change without notice.*

*The images are for illustration purposes only.*

7

GYPSUM

19

INVESTMENTS

27

SILICONES

49

RESIN

57

THERMOPLASTIC MATERIALS

63

SANDS

69

ACIDS

73

WAXES

85

MISC



GYPSUM 7



## CLASS IV GYPSUM



Gypsum with high physical properties suitable for all types of prosthetic works and ideal for dies. It guarantees excellent precision in details and high stability under pressure.

- Features:**
- High compression resistance
  - High fluidity, thixotropic
  - Quick and easy to use
  - Excellent performance under mill

**Colours and packaging:**  
 White: 5 kg  
 Ivory (ideal for Cad Cam scanner): 5 kg  
 A.P.R. (Apricot): 5 kg

Codes:	GES000094	ivory	5 kg
	GES000095	a.p.r.	5 kg
	GES000097	white	5 kg



Extra-hard gypsum for dies and antagonist models. Resin free, it offers high hardness and precision. It is indicated for the development of models with plastic base.

- Features:**
- High abrasion resistance
  - Thick paste
  - Good definition of details
  - High mechanical features
  - Excellent castability under vibration

**Colours and packaging:**  
 Hazelnut: 5 kg / 20 kg

Codes:	GES000517	hazelnut	5 kg
	GES000518	hazelnut	20 kg

Packaging may be subject to change without notice. The images are for illustration purposes only.

## DEEP ROCK



Hard gypsum for removable prostheses and antagonist models. Formulated in order to obtain excellent compatibility with alginates. Thanks to its particular hardness and fluidity, it can be used for all types of models.

### Features:

- Excellent resistance to thermal shocks
- Creamy paste
- Low expansion
- Thixotropic so as to make the model creation easier

### Colours and packaging:

**Pink / Grey: 20 kg**

Codes: GES000051 pink 20 kg  
GES000016 grey 20 kg

## SUPER STONE



High resistance and low expansion gypsum, indicated for the development of antagonist models and for frame work and removable prostheses. Compatible with all impression materials and with a limited occlusal abrasion.

### Features:

- High hardness
- Creamy paste
- Good reproduction of details
- Smooth, hard and precise surface
- Good reproduction of details

### Colours and packaging:

**White: 20 kg**

Codes: GES000037 white 20 kg

## PLAST ROCK



Extra-hard gypsum for dies, suitable for all types of prosthesis works in which high precision and great definition are required. Due to its fluidity, it is indicated for the development of rigid bases.

### Features:

- Highly fluid gypsum
- Excellent compatibility with impression materials
- For easier and faster mixing, wet the powder abundantly
- High compression resistance

### Colours and packaging:

**Ivory: 5 kg**

**A.P.R. (Apricot): 5 kg**

Codes: GES000092 ivory 5 kg  
GES000093 a.p.r. 5 kg

## ORTO STONE



Extra-white hard gypsum for making antagonist and orthodontic models

### Features:

- Extra-white
- Thixotropic
- Microfine grained
- Easy to polish
- Plastic

### Colour and packaging:

**Extra-white: 5 kg / 20 kg**

Codes: GES000530 white 5 kg  
GES000151 white 20 kg

## PRO ROCK



High expansion Gypsum particularly ideal for thermoplastic resins as it compensates for retraction.

### Features:

- High mechanical features
- Marble velvety appearance
- Its high expansion compensates for the retraction of the thermoplastic resins at the time of the injection

### Colours and packaging:

**Rosy: 5 kg**

Codes: GES000035 pink 5 kg

## BASE STONE



Gypsum for fluid casting bases to be used with rubber moulds

. It is ideal for the production of bases with the split-cast technique and for the counter moulds of the muffles.

### Features:

- Extremely fluid casting
- Self-levelling
- Very low expansion
- High mechanical features

### Colour and packaging:

**White/ Grey: 5 kg**

Codes: GES000003 white 5 kg  
GES000011 grey 5 kg

## TEIKO STONE



Extra-hard, thixotropic class IV gypsum for high-performance techniques such as implant work. Teiko Stone is suitable for creating fixed prostheses, being among the highest quality gypsum in the extra-hard category.

### Features:

- Quick hardening time
- High fluidity
- Thixotropic properties
- It can be removed from the mould after 35 min.
- Low expansion (0.08 %)

### Colours and packaging:

White/Ivory/Apricot: 5 kg

Code:	GES000091	a.p.r.	5 kg
	GES000098	white	5 kg
	GES000099	ivory	5 kg

## CLASS III GYPSUM

## ORTO GIPS



Hard gypsum for making antagonist models, orthodontic prostheses and removable prostheses. Good reproduction of details. It is compatible with all impression materials.

### Features:

- Good final hardness
- Compact
- Creamy paste

### Colour and packaging:

White: 20 kg

Code: GES000131 white 20 kg

## ARTIC STONE



Extrafine, fast setting and low expansion gypsum. Indicated for mounting master casts on individual articulator, for the production of precision masks, for the moulds of the muffles.

### Features:

- Thixotropic
- Very low expansion
- Excellent malleability
- Extra-white
- Perfect fixing of the models in articulator

### Colours and packaging:

White: 4.5 kg / 20 kg

Codes:	GES000525	white	4.5 kg
	GES000528	white	20 kg

## SCOOP



Hard gypsum for making antagonist models, frame work prostheses and removable prostheses. Thixotropic in order to make the model creation easier.

### Features:

- Creamy paste
- High mechanical features
- Good reproduction

### Colour and packaging:

Yellow: 20 kg

Code: GES000140 yellow 20 kg

## DIPHO STONE



Gypsum for mounting models in articulator and occluder, for putting the total prostheses in muffle and for making masks of the frame work prosthesis. It offers a solution for any type of dental technique.

### Features:

- Thixotropic
- Fast setting times
- Low expansion
- Setting plastic phase
- Excellent malleability

### Colour and packaging:

White: 18 kg

Code: GES000557 white 18 kg

## CLASS II GYPSUM

## ALBA STONE



Special gypsum mixture indicated for model base, for mounting in occluder and for counter mould in muffle. It is a fine grained ventilated gypsum with setting plastic phase.

### Features:

- More resistant to compression than alabastrine
- Suitable for packing and putting in muffle complete and partial denture prostheses
- Easy to deinvest

### Colours and packaging:

White: 18 kg

Code: GES000179 white 18 kg

## ACCESSORIES FOR GYPSUM

### PLASTIC GIPS



Special additive with added resin for class IV gypsum. Replaces distilled water and does not affect the gypsum expansion.

**Features:**

- Improves the gypsum superficial smoothness
- Reduces the possibility of chipping when working with mills

**Colour and packaging:**

Colourless/Black/Blue/Red/Yellow: 1 l bottle

Codes:	GES000141	white	1 l
	GES000201	black	1 l
	GES000202	blue	1 l
	GES000203	red	1 l
	GES000204	wyellow	1 l

### S.O.R.



Chemical solution to neutralize alginic acid. Reduces the chemical reaction between the gypsum and alginate, eliminating impurities and dusting on gypsum models.

**Features:**

- Easy to use
- It can be used with all alginates
- It does not damage the impressions

**Packaging:**

1 l bottle

Code: GES000144

### MAGNETICS



Magnets with counter-magnets for the split-cast system.

**Features:**

- Practical
- Magnet fixed to holder using resin
- Metal treated with anti-oxidiser

**Packaging:**

box containing 20 pieces / box containing 100 pieces

Codes:	VAR000282	10 pcs. + 10 pcs.
	VAR000283	50 pcs. + 50 pcs.

### TECHIFIT BLUE



Die spacer for creating relief on gypsum dies. Resistant to scratching and vaporisation. High adherence to gypsum dies.

**Features:**

- 3 micron (transparent) and 10 micron (blue) thickness
- High adherence to gypsum dies.
- Seals the gypsum porosity
- Resistant to scratching and vaporisation
- Package including dosing brush

**Colour and packaging:**

Blue: 15 ml bottle with dosing brush

Code: VAR000120

### TECHIFIT LIGHT



Photo-curing lacquer to create relief on gypsum and resin dies. Leaves the surface polished and hard. Does not evaporate or thicken.

Techifit Light is also used to isolate gypsum from thermoplastic materials. Max. temperature: 250°C

ATTENTION: DO NOT USE NYLON-BASED RESIN FOR INJECTION. (Protheus)

**Features:**

- Transparent (10 micron)
- Easy application
- Leaves the surface polished and hard.
- Hardens evenly
- Does not evaporate or thicken
- Strong resistance to scratches and to thermal shocks

**Colour and packaging:**

Transparent: 30 ml bottle

Codes: VAR000124



Lacquer to seal and strengthen the edges of the gypsum die.

**Features:**

- Transparent
- No thickness
- Leaves the die surface harder and smoother
- Water repellent
- Package including dosing brush

**Packaging:**  
15 ml bottle

Code: VAR000122 15 ml

*Separate dyes are available on request*



PRODUCT NAME	MIXING RATIO	PROCESSING TIME AT 23°C	SETTING TIME AT 23°C	EXPANSION AFTER 2 HOURS	COMPRESSION RESISTANCE 1H
T6	20 ml 100g gypsum	> 6 min	> 10 min	< 0.08%	> 45 N/mm <sup>2</sup>
TC 15	20 ml 100g gypsum	> 5 min	> 10 min	< 0.08%	> 45 N/mm <sup>2</sup>
DEEP ROCK	25 ml 100g gypsum	> 5 min	< 14 min	≤ 0.1 %	> 35 N/mm <sup>2</sup>
PLAST ROCK	18/20 ml 100g gypsum	> 7 min	> 14 min	≤ 0.08 %	> 45 N/mm <sup>2</sup>
PRO ROCK	20 ml 100g gypsum	> 6 min	> 10 min	> 0.35 %	> 45 N/mm <sup>2</sup>
SUPER STONE	25 ml 100g gypsum	> 5 min	< 13 min	< 0.1 %	> 35 N/mm <sup>2</sup>
ORTO STONE	25 ml 100g gypsum	> 5 min	> 15 min	< 0.1 %	> 35 N/mm <sup>2</sup>
BASE STONE	23/25 ml 100g gypsum	> 5 min	< 13 min	< 0.06 %	> 35 N/mm <sup>2</sup>
TEIKO STONE	20 ml 100g gypsum	7 min	< 13 min	< 0.08%	> 55 N/mm <sup>2</sup>
ORTOGIPS	27 ml 100g gypsum	< 8 min	≤ 14 min	≤ 0.15 %	> 30 N/mm <sup>2</sup>
ARTIC STONE	30 ml 100g gypsum	N.C	4 min	< 0.05%	> 12 N/mm <sup>2</sup>
SCOOP	28 ml 100g gypsum	> 5 min	< 12 min	≤ 0.15 %	> 30 N/mm <sup>2</sup>
DIPHO STONE	30 ml 100g gypsum	N.C	5 min	≤ 0.08 %	> 16 N/mm <sup>2</sup>
ALBA STONE	45 ml 100g gypsum	5 min	> 6 min	< 0.30 %	> 16 N/mm <sup>2</sup>





ERMES



Phosphate-bonded investment for high precision casting developed for fast-fire or traditional processes. Graphite free. Also suitable for pressed ceramics.

**Features:**

- High casting fluidity
- High precision casting is obtained
- Excellent reproducibility and superficial smoothness
- Compatible with non-precious and precious alloys and pressable ceramics
- It can be used with the free or controllable expansion technique

**Packaging:**

5 kg / 50 sachets x 90 g / 60 sachets x 60 g

Codes: RIV000300	5 kg
RIV000320	50x90 g
RIV000321	60x60 g

DISIL VEST



Phosphate coating specially developed for lithium disilicate die-casting. Suitable for milled and pressed wax or resin restorations.

**Features:**

- Excellent precision
- Low reaction layer
- Excellent quality
- Used with both the quick and conventional methods
- Super fine powder
- Creamy consistency

**Packaging:**

30 sachets x 100 g

Codes: RIV000017	30x100g
------------------	---------

Packaging may be subject to change without notice. The images are for illustration purposes only.

## FREE VEST



Refractory microfine grained investment for use where higher reliability is required. Can be used with fast-fire and slow-fire. Also for the free expansion technique.

### Features:

- Expansion easy to control
- Fine consistency
- Smooth surfaces of the alloy after casting
- Suitable for all types of metals: from gold to non-precious alloys
- Ideal for pressed ceramic
- Excellent precision

### Packaging:

38 sachets x 160 g

Code: RIV000001 38x160 g

## ABACUC



Phosphate-bonded investment for type 2 framework prostheses, quick and traditional. Excellent fluidity.

### Features:

- Fine grained powder
- Ideal for the fast-fire or traditional heating process
- Compatible with silicone and duplication gelatine
- Very smooth surfaces
- Stable borders
- Free or controllable expansion
- Compatible with all alloys

### Packaging:

30 sachets x 200 g

Code: RIV000030 30x200 g

## FREE VEST LIQUID



Special liquid for expansion control only for Free Vest.

### Features:

- Sensitive to cold
- It can be mixed with distilled water

### Packaging:

1 l bottle

Code: RIV000002 1 l

## 3D CASTING



Phosphate-bonded refractory for casting items made with 3D printer resins.

### Features:

- Proven quality
- Consistent results for castings
- 3D Casting provides easy cleaning
- Produces smoother surfaces compared to other investments
- Suitable for fast-fire or traditional processes.

### Packaging:

5 kg

Code: RIV000710 5 kg

## HI-SALD



Gypsum-bonded investment for soldering, 'fast-fire' type. It does not require preheating. Indicated for primary soldering.

**Features:**

- Excellent precision and stability
- High reliability
- High dimensional stability and resistance to cracks
- Quick to clean up
- Expansion on setting < 0.15% after 2 hours

**Packaging:**

5 kg / 1.8 kg

Codes: RIV000532 5 kg  
RIV000533 1.8 kg

## GLAS FIRE



Refractory ceramic fibre used to compensate for investment expansion. Technique adopted with cylinders.

**Features:**

- Asbestos free
- Thickness: 1 mm
- Height: 45 mm
- It does not burn
- Impermeable
- Easy to apply

**Packaging:**

roll 1 mm thick, 45 mm high, 20 m long

Code: RIV000170

## SIL



SIL 30% and 40% for high expansion. Special liquid for expansion control for phosphate-bonded investments.

**Features:**

- Normal version 30 %
- For high expansion 40%
- Withstands temperatures not below 5°C

**Packaging:**

1 l bottle

Codes: RIV000140 30% 1 l  
RIV000141 40% 1 l blue colour

## TEMPER



Liquid for cold tempering investment models for frame work prostheses.

**Features:**

- Hardens and seals the investment surface
- Easy to use
- Burns without leaving residues

**Packaging:**

1 l bottle

Code: RIV000184



## FLUID SILICONES FOR ADDITION

### VISIONSIL



#### VISIONSIL 45 SHORE A / 70 SHORE A.

Fluid transparent addition silicone. Suitable for the pressing and injection technique for photo polymerized compounds.

#### Features:

- Easy application
- No risk of bubble formation
- It is not distorted
- Long processing time
- Thixotropic
- Highly transparent with excellent passing of UVA rays
- Colour: translucent

VISIONSIL 45 Shore A Working time at 23°C: 1' 30"  
 VISIONSIL 70 Shore A Working time at 23°C: 25"  
 VISIONSIL 45 Shore A Setting time at 23°C: ≤ 20'  
 VISIONSIL 70 Shore A Setting time at 23°C: ≤ 8'

#### Packaging:

2 cartridges x 50 ml + 10 nibs

Codes: SIL000108 VISIONSIL 45 SHORE  
 SIL000040 VISIONSIL 70 SHORE

### VEROSIL



#### VEROSIL 45 SHORE A.

Fluid, low transparency addition silicone.

#### Features:

- Translucent
- Indicated for photo polymerized compounds

Working time at 23°C: 25'  
 Setting time at 23°C: ≤ 180'

#### Packaging:

1 kg A + 1 kg B / 5 kg A + 5 kg B

Codes: SIL000110 1 kg + 1 kg  
 SIL000111 5 kg + 5 kg

### HARDUPLEX



12 SH Light blue  
 18 SH Pink-T  
 20 SH Blue  
 23 SH Yellow  
 30 SH Green

Platinic-based addition silicone for duplication in laboratory. Ideal for the duplication of models in the frame work prosthesis with undercuts in which maximum precision is required. Thanks to its chemical-physical properties, it meets all the necessary requirements for the duplication in muffle.

#### Features:

- 5 Hardness SH A and 5 different colours
- Mixing ratio 1:1
- 99.95% of elastic memory return
- High precision
- High casting fluidity
- High tearing resistance
- High translucency

#### Advantages:

- Simple dosage
- Compatible with gypsum, phosphate-bonded investments and acrylic resins
- Excellent reproduction of details
- It is not distorted during the model removal
- High reproduction of details

HARDUPLEX 20/23/30 Shore A Working time at 23°C: 3'  
 HARDUPLEX 12/18 Shore A Working time at 23°C: 4' 30"

HARDUPLEX 20/23/30 Shore A Setting time at 23°C: ≤ 15'  
 HARDUPLEX 12/18 Shore A Setting time at 23°C: ≤ 30'

#### Packaging:

1 kg A + 1 kg B / 5 kg A + 5 kg B

#### Codes:

SIL000120 1 kg A+ 1 kg B HARDUPLEX 12 SHORE  
 SIL000121 5 kg A+ 5 kg B HARDUPLEX 12 SHORE  
 SIL000310 1 kg A+ 1 kg B HARDUPLEX 18 SHORE T  
 SIL000311 5 kg A+ 5 kg B HARDUPLEX 18 SHORE T  
 SIL000092 1 kg A+ 1 kg B HARDUPLEX 20 SHORE  
 SIL000093 5 kg A+ 5 kg B HARDUPLEX 20 SHORE  
 SIL000116 1 kg A+ 1 kg B HARDUPLEX 23 SHORE  
 SIL000117 5 kg A+ 5 kg B HARDUPLEX 23 SHORE  
 SIL000047 1 kg A+ 1 kg B HARDUPLEX 30 SHORE  
 SIL000048 5 kg A+ 5 kg B HARDUPLEX 30 SHORE

Packaging may be subject to change without notice. The images are for illustration purposes only.

## BYTE DENTAL

BYTE DENTAL is a silicone for addition suitable for a detailed occlusal registration. Thanks to its smooth and creamy consistency, Byte Dental flows exactly where desired. Its excellent manageability is the key to a perfect occlusal fit right from the start.

### Features:

- Almost imperceptible consistency
- Quick
- No bite resistance
- Hard as a rock for precision but flexible for easy cutting

Working time at 23°C: 30'  
Setting time at 23°C: 90'

### Packaging:

2 cartridges x 50 ml + 10 nibs

Codes: SIL001010



## REBASING NEW

REBASING NEW does not require hot polymerisation and is applied directly on the prosthetic base and becomes set quickly, both in the mouth and in the muffle without any exothermic reaction.

### Features:

- Soft, non-porous, silicone-based material for long-term relining. To be used at the dental practice or in the laboratory
- Adhesion to any acrylic resin for prostheses thanks to the excellent adhesive primer
- Long-term comfort for the patient - free From irritating and plasticizing materials
- Biocompatible and biodegradable, odourless and tasteless
- It does not discolour
- Hardness 35 SH

### Advantages:

- Pad for acute alveolar processes
- Relining in implantation
- Readjustment of prostheses
- Methacrylate free
- Odourless and tasteless

### Packaging (kit):

1 50 ml cartridge + 1 5 ml primer  
1 lacquer for polishing (a+b) + 6 mixers

Code: SIL000098



## GENGISIL SOFT

### GENGISIL SOFT 45H

Fluid addition silicone for the production of false gums for fixed prostheses.

### Features:

- Natural pink
- Resistant
- Self-mixing system in cartridge that favours the product application in the gums reproduction

### Advantages:

- Millable
- Precise and stable
- Easy application
- Definition of edges

Working time at 23°C: 2' 40"  
Setting time at 23°C: ≤ 15'

### Packaging:

2 cartridges x 50 ml + 10 nibs + 5 interoral tips + Isosil

Code: SIL000041



## GENGISIL NEW

### GENGISIL NEW 70 SHORE A.

Fluid addition silicone for the production of false gums for fixed prostheses.

### Features:

- Natural pink
- Resistant
- Self-mixing system in cartridge that favours the product application in the gums reproduction

### Advantages:

- Millable
- Precise and stable
- Easy application
- Definition of edges

Working time at 23°C: 1'  
Setting time at 23°C: ≤ 8'

### Packaging:

2 cartridges x 50 ml + 10 nibs + 5 interoral tips + Isosil

Code: SIL000025



## GENGISIL



### GENGISIL 85 SHORE A.

Fluid addition silicone for the production of false gums for fixed prostheses. The superior hardness makes milling easier while finishing the false gums on the model.

#### Features:

- Natural pink
- Rigid
- Self-mixing system in cartridge that favours the product application in the gums reproduction

#### Advantages:

- Millable
- Precise and stable
- Easy application
- Definition of edges

Working time at 23°C: 1'10"

Setting time at 23°C: ≤ 6'

#### Packaging:

2 cartridges x 50 ml + 10 nibs + 5 interoral tips + Isosil

Code: SIL000107

## BEN POSITION



### BEN POSITION

Addition silicone in a cartridge, the brainchild of dental technician Benny Fiandaca of Palermo. It has multiple advantages over traditional position impression casting techniques, in particular, over metal-free, zirconium, disilicate, Peek and PMMA, as well as metal-ceramic processing. The 85 SH hardness allows good product stability. They are available in 2 colours: A2 and A3.

#### Features:

- Addition silicone in cartridges
- In addition to reproducing the position, it reproduces the mucosa
- Since it is tooth-like in colour, it does not optically interfere with the stratification of metal-free materials
- Even when turned upside down, since it adheres enough even without using a spacer, it remains stable and anchored without falling off the model
- There is no longer a need to insulate the gypsum model during the stratification phase, since silicone, which is already oily, facilitates the detachment of the ceramic or composite from the model
- No more broken edges or caps if poorly insulated
- Material ideal for Cad Cam scanner

Working time at 23°C: 1'15"

Setting time at 23°C: ≤ 6'

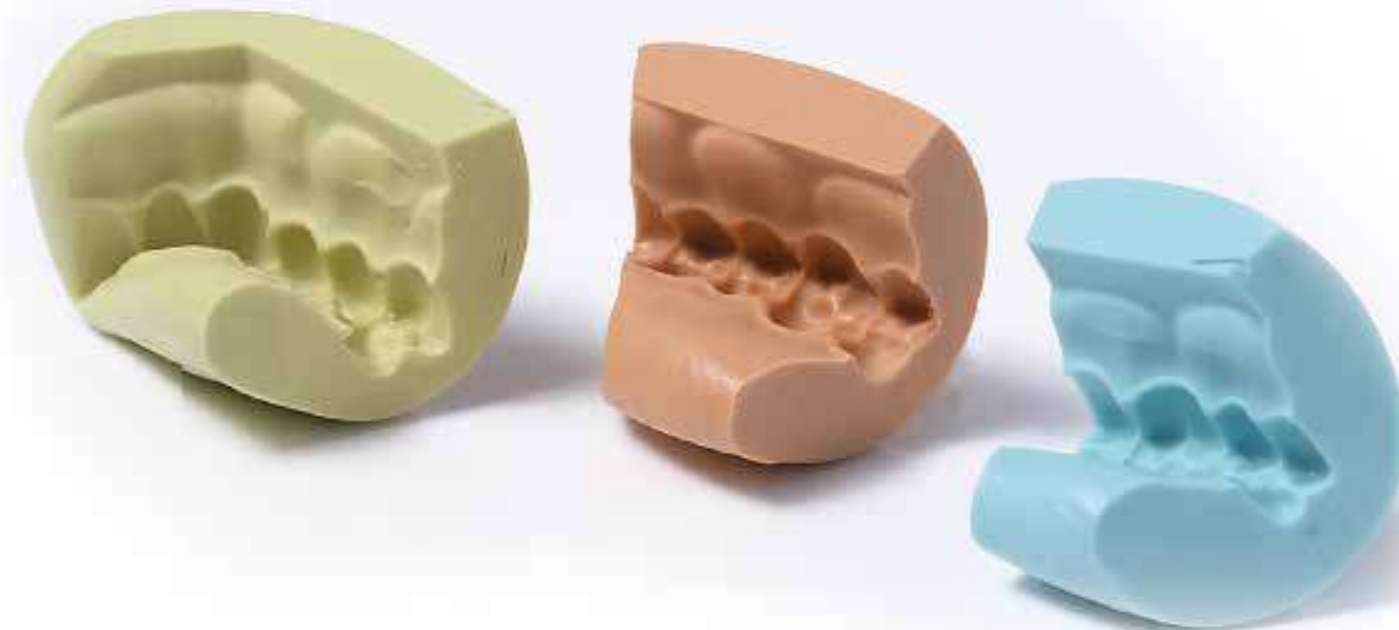
#### Packaging:

1 50 ml cartridge - colour A2  
1 50 ml cartridge - colour A3  
+ 10 mixer + Isosil

Code: SIL000002



## PUTTY SILICONES FOR ADDITION



- 90 Shore A orange
- 80 Shore A light blue
- 70 Shore A yellow

Putty addition silicone with 1:1 mixing ratio. HD SIL can be modelled during working and is rigid once hardening is completed, but it keeps the values measured unaltered. Due to its ease of use, it is ideal for the pressed ceramic technique, counter moulds in total prostheses, and masks.

### Features:

- High final hardness
- Dimensional stability
- It does not irritate the skin
- Resistant to temperature

### Advantages:

- Unalterable over time
- High detail precision
- Millable
- Low linear retraction
- Easy to use
- No deformation in muffle

HD SIL 90 Shore A	Working time at 23°C: 1' 20"
HD SIL 70/80 Shore A	Working time at 23°C: 1' 40"
HD SIL 90 Shore A	Setting time at 23°C: ≤ 6'
HD SIL 70/80 Shore A	Setting time at 23°C: ≤ 6'

**Packaging:** 5 kg A + 5 kg B + 2 measuring spoons

Codes: SIL000021	5 kg A + 5kg B	HD SIL 90
SIL000027	5 kg A + 5kg B	HD SIL 80
SIL000023	5 kg A + 5kg B	HD SIL 70
SIL000043	1.5kgA + 1.5kg B	HD SIL 90
SIL000042	1.5kgA + 1.5kg B	HD SIL 80
SIL000039	1.5kgA + 1.5kg B	HD SIL 70

Different colours and packaging quantities can be made on request

## HD SIL 60



HD SIL 60 SHORE A. Putty addition silicone with a 1:1 mixing ratio specifically for masks and for the assembly of saddles on frameworks.

### Features:

- Beige
- Minimum dimensional variation
- Excellent definition of details
- Ideal elasticity for position masks
- Occlusal registration
- Blocking of undercuts

Working time at 23°C: 2'  
Setting time at 23°C: ≤ 6'

**Packaging:** 1 kg A + 1 kg B + 2 measuring spoons

Code: SIL000068

Different colours and packaging quantities can be made on request

## PUTTY CONDENSATION SILICONES

### MASCHERSIL



#### MASCHERSIL 85 SHORE A.

Condensation silicone used for making masks, for mounting retainers in the plates, for controlling the production of metallic structures and for producing temporary prostheses. Indicated also for isolating teeth/ gypsum in muffle.

#### Features:

- Good paste malleability
- Extremely high fluidity
- Elastic, high tensile strength
- Excellent elastic memory return
- Excellent heat resistance (147°C)
- Accurate reproduction of details
- It can be mixed with the gel or liquid catalyst
- Colour: whitish

Working time at 23°C: 1' 30"

Setting time at 23°C: 4'

#### Packaging:

5 kg bucket + 3 Gelcat + 1 measuring spoon

Code: SIL000062

Different colours and packaging quantities can be made on request

### HARD MASK



#### HARD MASK 95 SHORE A.

Extra-hard condensation silicone used for the construction of masks, putty models, control masks, assembly of saddles on frameworks and the production of false gums.

#### Features:

- Good paste malleability
- Good precision and definition of details
- Resistant to heat (185°C)
- Millable
- It can be mixed with the gel or liquid catalyst
- Colour: light grey

Working time at 23°C: 1' 30"

Setting time at 23°C: 4'

#### Packaging:

5 kg bucket + 3 Gelcat + 1 measuring spoon

Code: SIL000072

Different colours and packaging quantities can be made on request

## INSULATORS

### SYLICUM FLUID



Fluid condensation silicone isolator for isolating artificial teeth in the total prosthesis. High compatibility with oral fluids, excellent fluidity on the material of the first impression.

#### Features:

- Reduces finishing times
- Easy silicone application
- Thixotropic
- Easily removed after firing
- White

Shore hardness A: 50 SH

Working time at 23°C: 1'10"

Setting time at 23°C: ≤ 10'

#### Packaging:

600 g + 1 Velocat + 800 g of retention sand

Code: ISO000032

### PROSIL



Poly-addition silicone for the injection and muffle pressing technique, for the insulation and protection of resin or ceramic teeth during investing. PROSIL is applied in a single procedure on teeth or wax, forming a very hard insulating film that fixes the teeth while applying the resin.

#### Features:

- Has low viscosity and high final hardness
- Pink

Shore hardness A: 85 SH

Working time at 23°C: approx. 1' 10"

Setting time at 23°C: ≤ 6'

#### Packaging:

4 cartridges x 50 ml + 20 nibs

Code: SIL000011 4 x 50 ml + 20 nibs

## SPRAYSOL



Excellent insulator between materials of the same type. Specifically for addition and condensation silicones.

**Features:**

- Prevents the adhesion of silicones during the construction of gingival masks
- Guarantees a good separation of the silicone impression from the gingival mask
- Only for extra-oral applications

**Packaging:**  
85 ml spray

Code: SIL000018

## ISOGIPS



Isolating material specifically for gypsum, separates gypsum from gypsum.

**Features:**

- Practical spray bottle
- Does not affect dimensions

**Packaging:**  
100 ml spray

Code: ISO000040 spray 100 ml

## ISOLAIT M/2



Insulating alginate between gypsum and resin.

**Features:**

- Minimum thickness
- Perfect detachment of resin from the gypsum
- Easy to apply

**Packaging:**  
1 l bottle

Code: ISO000011

## ISOPOL



Universal wax-based insulator for separating polyurethane resins from polyethers.

**Features:**

- Easy to apply with the practical spray
- Leaves no residue
- Does not affect dimensions
- Valid gypsum-gypsum insulator on large surfaces

**Packaging:**  
200 ml spray

Code: RES050006

## UNIVERSAL SPRAY



Ideal to be sprayed on the aluminium cartridges as lubricant during the injection phase. Spray resistant to high temperatures, particularly ideal for thermoplastic resins.

**Packaging:**  
500 ml spray

Code: SIL000500

## G.M.P.

Alcohol-based isolating material between gypsum and wax; does not affect dimensions. Perfect separation of wax from gypsum, easy to spread.

**Packaging:**  
50 ml bottle

Code: ISO000022

## FLUID CONDENSATION SILICONES

M.A.Q.  
30



New generation silicone condensation fluid for duplication of gypsum models and investment (replaces gelatine).

**Features:**

- Condensation silicone
- Extremely economical
- Elastic
- Good reproduction of details
- Good precision
- Not subject to inhibitions from external agents
- High casting fluidity
- Elastic recovery 98.5%
- Colour: Whitish
- Catalyst: Blue
- Shore hardness A 30

Working time at 23°C: 6-8'  
Setting time at 23°C: ≤ 60'

**Packaging:**  
6 pkgs of 1 kg + 1 300 g liquid cat + becker + spatula

Code: SIL000150

## DUPLICATION GELATINE

DUBLIGEL



Duplication gelatine for investment and gypsum models.

**Features:**

- Reversible
- Good dimensional stability
- Good precision and definition of details
- Compatible with gypsum, phosphate-bonded and alcoholic investments

**Packaging:**  
6 kg bucket

Code: VAR000275

## ACCESSORIES

MUFFLE  
DUPLICATION  
PLASTIC



Polycarbonate box for duplicating dental models by casting silicone.  
Height: 55 mm

**Packaging:**  
1 muffle

Code: ATT000111

VELOCAT



Liquid catalyst for silicones.

**Features:**

- It can be used with all condensation silicones
- Fast catalysis
- Easy dosage
- Transparent

**Packaging:**  
30 ml bottle

Code: CAT000051

SPINFLEX



Sprayed on the surface of the silicone material it reduces surface tension and increases fluidity of water-based materials (gypsum and investments).

**Features:**

- Does not affect dimensions
- Eliminates the risk of bubbles
- Indispensable for accurate detail reproduction

**Packaging:**  
125 ml spray

Code: VAR000081

# GELCAT



Gel catalyst for silicones.

**Features:**

- It can be used with all condensation silicones
- Easy dosage
- Chromatic contrast
- Red

*Packaging:*  
40 g tube

Code: CAT000035

# INTER ORAL

INTER ORAL TIP, YELLOW

*Packaging:*  
50 pcs.

Codes: Yellow nib

SIL000086

# BR10



Degreaser for all types of impressions. Removes traces of blood and saliva.

*Packaging:*  
1 l bottle

Code: VAR000070

# NIBS



- Codes: SIL000163 Yellow nib: long, 50 pcs.  
 SIL000167 Light blue nib: thin tip, long, 50 pcs.  
 SIL000907 Pink nib: cut-off tip, short, 50 pcs.  
 SIL000902 yellow nib, short, 50 pcs.  
 SIL000903 blue nib, short, 50 pcs.  
 SIL000980 easyline nib, single-phase, 20 pcs.

*\* The image is for illustration purposes only*



# easy LINE

DENTAL PRACTICE  
SILICONES

## easy LINE Gold



Addition silicone for the detection of the impressions in the oral cavity. Indicated for bridges and crowns, partial dentures, implantation. In spite of the possible presence of undercuts, the easy removal of the silicone from the oral cavity is guaranteed. Highly hydrophilic and thixotropic silicone, high tearing resistance.

**Features:**

- Mixing ratio 1:1
- High dimensional stability over time
- Excellent adhesion with the liner material
- Simple to mix
- Easy Line Gold, green
- Easy Line Silver, blue

Code: SME000003

## easy LINE Silver



**Advantages**

- Unalterable over time
- Excellent elastic recovery
- Accurate impression
- It is not greasy
- Hydrophilic
- Easy to remove from the oral cavity

Code: SME000004

## easy LINE Light



## easy LINE Regular



Addition silicone for the double impression technique in the oral cavity. Indicated for bridges and crowns, inlays and onlays, as well as combined and fixed dentures.

**Features:**

- Mixing ratio 1:1
- Thixotropic
- Excellent ratio between processing time and setting time

**Advantages**

- Excellent elasticity
- Possibility of casting several models in the same impression
- Good compatibility with all casting materials
- High fluidity
- Excellent elasticity
- Fast vulcanization times in the oral cavity
- High detection of details

Code: SME000002

Code: SME000001

## easy LINE Mono

Easy Line Mono is a single-phase impression material, developed for the single-phase impression technique and for high precision impressions. It guarantees maximum precision, even in a humid environment, and excellent dimensional stability.

**Features:**

- Mixing ratio 5:1
- Hydrophilic
- Thixotropic
- Biocompatible
- Yellow colour

**Advantages**

- Resistant to deformation
- Excellent elastic recovery
- Easy removal from the patient's mouth
- High tear resistance
- Easy to use

Code: SME000007



EASY ALIGN



EASY ALIGN is a high-consistency chromatic alginate specifically for orthodontic impressions. Light blue in colour, the colour varies through the processing phases: purple during mixing, blue during insertion into the oral cavity.

- Features:**
- Thixotropic
  - Colour indication during processing independent of temperature and water hardness
  - Easy and precise to use
  - Ideal for precision dental impressions
  - High definition of details
  - Compatible with disinfectants for impressions
  - Colour: light blue
  - Mint flavour

**Packaging:**  
450 g + 450 g

Code: SME000005

S.O.R.



Chemical solution to neutralize alginic acid. Reduces the chemical reaction between the gypsum and alginate, eliminating impurities and dusting on gypsum models.

- Features:**
- Easy to use
  - It can be used with all alginates
  - It does not damage the impressions

**Packaging:**  
1 l bottle

Code: GES000144

STAR MIXING NEW



Manual mixer for the addition cartridges.

**Packaging:**  
1 box

Code: SIL000124

CLEAR TRAY



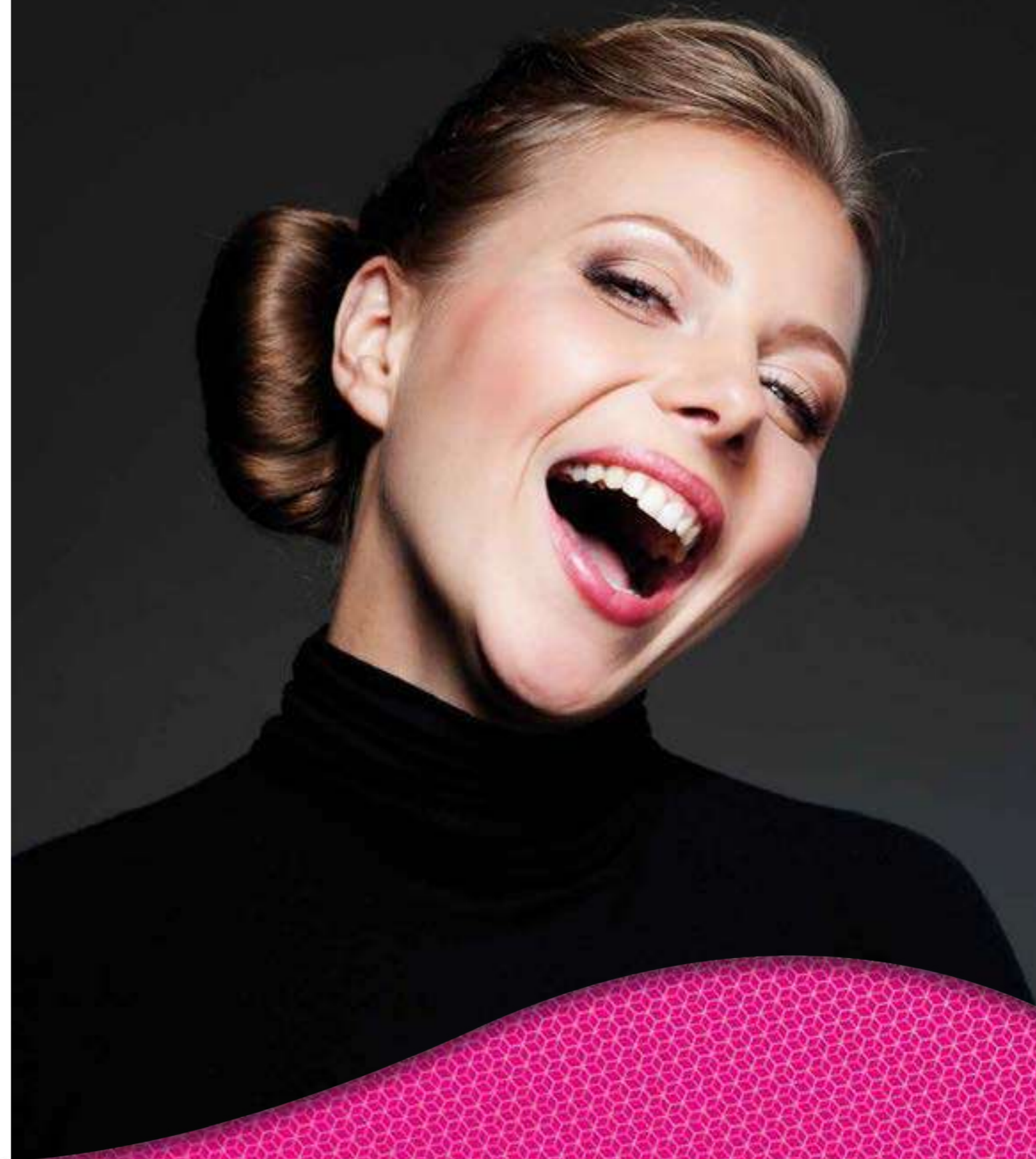
Specific detergent for removing alginate and gypsum residues from all types of impression trays (plastic, aluminium, stainless steel) and instruments.

- Features:**
- It does not damage the impression tray
  - Easy to use
  - Quick action

**Packaging:**  
500 ml

Code: SME000008

Product	Processing time (at 23°C)	Time of application in oral cavity	Setting time	Application	Set type	Elastic recovery	Shore
Easy Line Gold	approx. 1'40"	approx. 2'30"	approx. 4'30"	Fixed and Implantation	Fast set	> 99.8 %	65 ± 2
Easy Line Silver	approx. 1'40"	approx. 2'30"	approx. 4'30"	Fixed and Implantation	Fast set	> 99.8 %	65 ± 2
Easy Line Regular	approx. 2'	approx. 3'30"	approx. 5'	Fixed Removable Implantation	Normal set	> 99.8 %	55 ± 2
Easy Line Light	approx. 2'	approx. 3'30"	approx. 5'	Fixed and Implantation	Normal set	> 99.8 %	52 ± 2
Easy Line Mono	approx. 2'	approx. 3'30"	approx. 5'	Fixed Removable Implantation	Normal set	> 99.8 %	70 ± 2



## COLD-CURED RESIN FOR REMOVABLE PROSTHESES (PREMIUM)

PRESS

CE 0297



Cold-cured resin that can be polymerised in machine or in a pressure cooker. Indicated for making total and frame work prosthesis. Developed for the silicone matrix technique and the pouring technique in muffle.

**Features:**

- Excellent sliding properties
- Extremely easy to work with
- Excellent fluidity with shape and colour stability over time
- Cadmium free

Chromaticity: pink veined - pink - opaque pink

**Packaging:**

1 kg powder / 500 ml liquid

Codes: RES060004	pink Veined
RES060005	pink
RES060012	opaque pink
RES060006	liquid

## COLD-CURED RESIN FOR REMOVABLE PROSTHESES (BASIC)

NATURAL COLD

CE 0297



Acrylic resin suitable for the repair of self-curing dentures. Excellent adhesion with resins based on methyl methacrylate, and reflected colour. Also suitable for extensions of the prosthesis, for combined and temporary prosthesis, and for relining.

**Features:**

- Easy to work with
- Excellent fluidity
- Excellent castability
- Long plastic phase
- Chromatic unalterability
- Air polymerisation without porosity

Chromaticity: pink

**Packaging:**

1 kg powder / 500 ml liquid

Codes: RES000062	powder
RES000063	liquid

## COLD-CURED RESINS FOR REMOVABLE PROSTHESES (HIGH IMPACT)

EXPRESS PRESS

CE 0297



Resin with the same characteristics as a high impact resin that can be polymerized in a machine or in a pressure cooker. Suitable for total and frame work prostheses with low monomer content, as it contains micro-pearls that enable to make very aesthetically pleasing prostheses.

**Features:**

- Excellent sliding properties
- Suitable for the resin pressing and injection technique.
- Cadmium free
- Easy to handle
- Long plastic and casting phase
- Perfectly stable

Chromaticity: pink veined - pink

**Packaging:**

1 kg powder / 500 ml liquid

Codes: RES060051	pink Veined
RES060050	pink
RES060055	liquid

## HEAT-CURED RESIN FOR REMOVABLE PROSTHESES (PREMIUM)

DON

CE 0297



Resin made from high quality modern raw materials. Indicated for making total and partial prosthesis. It can undergo heat-cured polymerisation.

**Features:**

- Simple to work with
- Chromatic stability over time and high precision
- Low residual content of monomer and cadmium free
- Colour tone

Chromaticity: pink veined - pink

**Packaging:**

1 kg powder / 500 ml liquid

Codes: RES060001	pink veined DON	1 kg
RES060002	Pink DON	1 kg
RES060003	Liquid DON	500 ml

Packaging may be subject to change without notice. The images are for illustration purposes only.

## TEMPORARY APPL. RESIN



Self-curing resin that can be polymerised in machine or in a pressure cooker at low temperature for the construction of indirect temporary crowns and bridges. Based on PMMA; cadmium free.

**Features:**

- Ideal for the construction of long-lasting temporary prostheses
- Excellent abrasion resistance
- Less absorption of oral fluids
- Easy to polish
- Withstands masticatory loads for a longer time
- Homogeneous surfaces

Chromaticity: A1 - A2 - A3 - A3,5 - A4 - B3 - C2 - C3 - D3

**Packaging:**

100 g powder / 500 g powder / 80 ml liquid

Codes: RES000033	PROJET A1	100 g
RES000007	PROJET A2	100 g
RES000008	PROJET A3	100 g
RES000009	PROJET A3, 5	100 g
RES000018	PROJET A4	100 g
RES000010	PROJET B3	100 g
RES000011	PROJET C2	100 g
RES000019	PROJET C3	100 g
RES000017	PROJET D3	100 g
RES000013	LIQUID PROJÉT	80 ml

## RESIN FOR BITE GUARDS AND SURGICAL GUIDES



Cold-cured resin that can be polymerised in machine or in a pressure cooker. Suitable for the construction of braces, orthodontic bite guards, and surgical guides.

**Features:**

- High transparency
- Excellent precision
- It can be handled with the salt and pepper technique
- Excellent for the paste technique
- Chromatic unalterability
- Direct application as jet or paste

Chromaticity: transparent

**Packaging:**

1 kg powder / 500 ml liquid

Codes: RES002501	TECHISIN	1 kg
RES002505	TECHISIN	500 ml

## POLYURETHANE RESIN



Polyurethane pouring resin for the construction of high precision models and dies, resistant to cracks and for thinner structures. Compatible with impression materials for both polyaddition and poly-condensation as well as for alginates.

**Features:**

- Excellent fluidity
- Low retraction
- Quick hardening
- Hardness 82 shore D
- Good heat resistance
- Easy milling with diamond mills

Working time at 23°C: 4 min

Setting time at 23°C: 50 min.

Chromaticity: white - ivory - light blue - brown - grey

**Packaging (kit):**

500 g part A / 100 g Hardener / 1 mixing becker / 1 spatula

Codes: RES050002	K.W. NEW white
RES050003	K.W. NEW brown
RES050004	K.W. NEW ivory
RES050005	K.W. NEW light blue
RES050009	K.W. NEW grey

### ENAMELS FOR PROJÉT RESIN

ENAMEL	COLOUR	PACKAGING	CODES
S00	transparent	100 g	RES000023
S01	clear	100 g	RES000012
S02	medium	100 g	RES000021
S02	medium	500 g	RES000028
S03	medium/dark	100 g	RES000024
S04	dark	100 g	RES000022

## RESIN FOR OCCLUSAL SPLINTS AND IMPRESSION TRAYS

### REVOR LIGHT CE



UV sensitive resin splints. Indicated for the construction of occlusal splints, individual impression trays and bases of removable prostheses.

**Features:**

- Quick and simple to work with
- Excellent dimensional stability
- Rigid and resistant to tensile strength
- Uniform thickness

Chromaticity: transparent – blue – pink

**Packaging:**

box with protection including 50 splints

Codes: RES000503 transparent  
RES000504 pink  
RES000505 blue

### REVOR CE



Cold-cured methacrylic resin that can be polymerised in machine or in a pressure cooker. Indicated for the construction of occlusal splints, individual impression trays and bases of prostheses.

**Features:**

- Short mixing time
- It does not stick to instruments or fingers
- Excellent mechanical properties
- High precision and no removal from the model

Chromaticity: yellow powder, liquid

**Packaging:**

1 kg powder / 500 ml liquid

Codes: RES001020 Yellow POWDER  
RES001025 LIQUID

## CASTABLE RESIN

### BLUE BLOCK



Castable resin that burns without leaving residues; UV sensitive. Developed for the construction of Toronto Bridge caps and bars.

**Features:**

- Above 150°C the product leaves no residue in the furnace
- Specific weight 1.1 g /m<sup>3</sup>
- Easy and precise modelling
- It can be removed without distortion

Chromaticity: transparent blue

**Packaging:**

box with three 3 g syringes + 9 nibs

Codes: RES000016 3 g syringes

### R.H. INLAY



Cold-castable resin. Indicated for the melting and soldering technique. Developed for the construction of caps, individual attachments, abutments, fixing and resin dies. To be used with the brush modelling technique.

**Features:**

- Easy to mix and apply.
- Stable structure that leaves no residue in the furnace after elimination.
- High resistance and insignificant retraction

Chromaticity: red - transparent

**Packaging:**

80 g powder / 50 ml liquid

Codes: RES001541 red powder  
RES001550 transparent powder  
RES001542 red liquid  
RES001551 transparent LIQUID



THERMOPLASTIC  
MATERIALS

# THERMOPLASTIC MATERIALS

## PROTHEUS

CE

Thermoplastic material 100% free from monomers  
**PROTHEUS** is the ideal microcrystalline polyamide for the construction of flexible prostheses.

### Advantages:

- It is hypoallergenic
- Elastic
- Resistant to low temperatures
- High transparency
- Reduced absorption
- Economical

Chromaticity: transparent - pink - light pink

Packaging: 300 g bottle

Codes:	RES000160	clear	300 g
	RES000161	pink	300 g
	RES000162	flex clear	300 g
	RES000163	light pink	300 g
	RES000164	light pink flex	300 g
	RES000165	pink flex	300 g

Thermoplastic material 100% free from monomers  
**PROTHEUS FLEX** is the ideal microcrystalline polyamide for the construction of flexible prostheses. With respect to the traditional Protheus, elasticity is greater in this variant.

### Advantages:

- It is hypoallergenic
- Elastic
- Resistant to low temperatures
- High transparency
- Reduced absorption
- Economical

Chromaticity: transparent - pink

Packaging: 300 g bottle

## ASAKO

CE



**ASAKO** is a thermoplastic polymer specifically developed for the construction of flexible removable partial dentures and hooks in the gingival tissue colour. Comfortable and light, it gives the patient a pleasant grip, guaranteeing total absence of discomfort.

**ASAKO** is distinguished for its biocompatibility.

### Advantages:

- High mechanical features
- No absorption (unlike nylon)
- Light and comfortable
- Stain-resistant
- Indestructible
- Translucent
- Economical
- Free from monomers (ideal for allergic patients)
- Long-lasting (partial dentures)
- Easy finishing

Chromaticity: light pink - transparent - translucent pink  
 pink

Packaging: 250 g bottle

Codes:	RES000050	asako pink	250 g
	RES000051	light pink	250 g
	RES000052	transparent	250 g
	RES000054	translucent pink	250 g

## NXR

CE



**NXR** was born out of the desire to offer a valid alternative not only for those who would rather not use a fixed denture, but also for all those who are allergic to acrylic dentures, by virtue of its excellent biocompatibility, while also constituting an excellent substitute for plates.

**NXR** hardness is higher than Asako's, thus enabling the design of different dentures.

### Advantages:

- 100% non-allergic
- Completely nylon free
- It does not absorb liquids or unpleasant smells
- Excellent substitute for metal prostheses

Chromaticity:  
 "B" white - "C" light pink - "T" pink - "D" gums pink

Packaging: 250 g bottle

Codes:	RES000070	colour "T" pink	250 g
	RES000071	colour "B" white	250 g
	RES000072	colour "C" light pink	250 g
	RES000073	colour "D" gums pink	250 g

Packaging may be subject to change without notice.  
 The images are for illustration purposes only.

MIRROR POLISH



The Mirror Polish kit was developed by Dental Technician Fabrizio Donnari thanks to his daily experience in working with thermoplastic resins. The kit is made up of a particular mix of diatomaceous powders and a polishing putty.

**Features**

- Polishing dentures in just a few steps
- Saving time
- Suitable for polishing thermoplastic and acrylic resins

**Packaging:**  
1.5 kg Polish powder + 200 g polish paste

Codes: RES000651

*Techim dedicates this product to the memory of our dear friend Fabrizio Donnari, to whom we extend our gratitude.*

ACCESSORIES

CARTRIDGES



**T-TUBE CARTRIDGES**

Non-collapsible cartridge. Diameter 22 mm x 125 mm

Codes: RES000201 30 pcs. + Teflon caps  
RES000202 30 pcs. (no caps)

**COLLAPSIBLE CARTRIDGES**

Collapsible cartridge for the SABILEX-FLEXITE system; 25 x 115 mm diameter.

Code: RES000045 26 pcs. + caps

**COLLAPSIBLE CARTRIDGES**

Collapsible cartridge for the Smile Jet system  
Diameter 22 mm x 125 mm.

Code: RES000200 30 pcs. + metal caps

MUFFLE



**ALUMINIUM MUFFLE TYPE 100**

Muffle for injection of thermoplastic materials that can be used with the following systems:

- Full - Jet
- Smile - Jet
- Pressing
- MG New Press

A muffle for small details is also available. It consists of a standard muffle divided into two sections.

**Packaging:**  
1 piece in blister

Codes: ATT000211 type 100 muffle

LUX



Special formula for polishing thermoplastic resins.

**Packaging:**  
30 ml bottle

Code: RES000031

UNIVERSAL SPRAY



Ideal to be sprayed on the aluminium cartridges as lubricant during the injection phase. Spray resistant to high temperatures, particularly ideal for thermoplastic resins.

**Packaging:**  
500 ml spray

Code: SIL000500





## SANDS - PURE ALUMINIUM OXIDE

High quality aluminium oxide with sharp edges. 99.9% purity.  
Depending on the grain size chosen, the effect can range from light to very abrasive.  
The product does not generate any dust.

BIOXID



**BIOXID (50 -75 micron)**  
Medium-low grain aluminium oxide created for the elimination of oxides from the metallic structure and for mechanical retention-abrasion.

**Advantages:**

- On ceramic surfaces, with low pressure, it has a retention effect, which is useful for the enamel firing

**Packaging: 7 kg can**

Codes: SAB000020	50 my	7 kg
SAB000018	75 my	7 kg

BIOXID



**BIOXID (90 – 105 – 125 micron)**  
Medium-high grain aluminium oxide created for the elimination of oxides from the structure of hard (palladiated) metals and for mechanical retention.

**Advantages:**

- Indicated for cases in which strong metallic retention is required

**Packaging: 7 kg can**

Codes: SAB000017	90 my	7 kg
SAB000016	105 my	7 kg
SAB000015	125 my	7 kg

BIOXID



**BIOXID (150 – 250 micron)**  
Coarse grain aluminium oxide created for the elimination of investments and the oxide of metals.

**Advantages:**

- Indicated for cases in which strong metallic retention is required

**Packaging: 7 kg can**

Codes: SAB000014	150 my	7 kg
SAB000011	250 my	7 kg

Packaging may be subject to change without notice.  
The images are for illustration purposes only.

## SANDS - CORUNDUM

CORINSAT



WHITE CORINSAT (250 micron)  
Coarse grain white corundum.  
Particularly abrasive for the sandblast of plates.

**Advantages:**

- Strong and long-lasting over time

**Packaging:**  
10 kg can

Code: SAB000080

CORINSAT



RED CORINSAT (250 micron)  
Coarse grain red corundum. Indicated for the recycling  
sandblasters of frame work laboratories.

**Advantages:**

- Strong and long-lasting over time

**Packaging:**  
10 kg can

Code: SAB000070

## SANDS - QUARTZ-BASED

ABRAL



Extremely pure non-abrasive quartz-based sand.  
Suitable for the elimination of residues of phosphate-  
bonded investments from metallic structures with recycling  
sandblasters.

**Advantages:**

- Eliminates investment residues without abrading the  
metal

**Packaging:**  
6 kg can

Code: SAB000060

## SANDS GLASS MICROSPHERES FOR POLISHING

Non-abrasive glass microspheres created for polishing metals.

PERIPLAST



PERIPLAST (55 micron)

Glass microspheres with highly polishing effect.  
Indicated for the elimination of investment residues from  
pressed ceramics and from metallic structures.

**Advantages:**

- Polishing effect on occlusal tables
- Elimination of gypsum residues from the interstices of  
removable prostheses

**Packaging:**  
6 kg can

Code: SAB000050

PERIPLAST



PERIPLAST (90 micron)

Glass microspheres indicated for the elimination of residues of phosphate-bonded  
investments from metallic structures and for polishing occlusal tables.

**Advantages:**

- Polishing effect on occlusal tables

**Packaging:** 6 kg can

Code: SAB000040



TECHIM  
PERIPLAST

MICROSFERE DI VETRO  
PER LA LUCIDATURA DEI METALLI  
SYNTHETIC GLASS MICROSPHERE  
FOR METAL POLISHING  
MICROSPHERES DE VERRE  
POUR LE POLISSAGE DES METAUX  
MICROSFERA DE VIDRIO  
PARA EL ABRILLANTADO DEL METAL



## ARAL G



Chemical solution to dissolve gypsum and tartar residues on removable prostheses.

**Features:**

- Quick action
- It does not affect the resin
- Practical and functional
- To be used with ultrasonic washing machines
- Acid base

**Packaging:** 1 kg bottle

Code: ULT000030

## CHELA GESS



Hydrofluoric acid based chemical solution for the removal of phosphate-bonded investment and ceramic from metallic structures.

**Features:**

- Can be used with ultrasonic washing machines (always use plastic containers)
- Quick action
- It does not affect noble metal (corrodes titanium)
- Pickling action
- Do not use with palladiated alloys with high silver content and with titanium alloys
- Attention: contains hydrofluoric acid

**Packaging:** 1 l bottle

Code: ULT000010

## DEK ACCIAIO



Cleaning pickling agent for metals ideal for pickling stainless steel.

**Features:**

- Ready for use
- To be used cold or at a max. temperature of 40°C
- It eliminates green oxidation
- Attention: contains hydrofluoric acid

**Packaging:** 1 l bottle

Code: DEC000050

## TENSITOL



Chemical concentrate with high power degreasing surfactants.

**Features:**

- Energetic action
- Perfect cleaning
- It does not affect any product
- Extremely effective with ultrasonic and heated washing machine

**Packaging:** 1 kg bottle

Code: ULT000060

## DELCROM



Special solution to dissolve gypsum and alginate residues from impression trays, resin prostheses and instruments.

**Features:**

- It does not damage the impression tray
- Quick action
- Easy to use

**Packaging:** 1 l bottle

Code: POR000030

## CLEAR GIPS



Chemical solution to dissolve gypsum in removable prostheses.

**Features:**

- Acid free
- Practical
- Acts in short time
- To be used with ultrasonic washing machines
- Not acid

**Packaging:** 1 l bottle

Code: ULT000090

## SCHELETRIX



Chemical solution for electrolytic polishing of chrome cobalt. In-depth effect for brilliant surfaces.

**Features:**

- Polishing without streaks
- Long bath duration

**Packaging:** 1 l bottle

Code: ELE000040

## NEW RANDOX

Pickling agent in powder, substitute for sulphuric acid in the treatment of precious alloys.

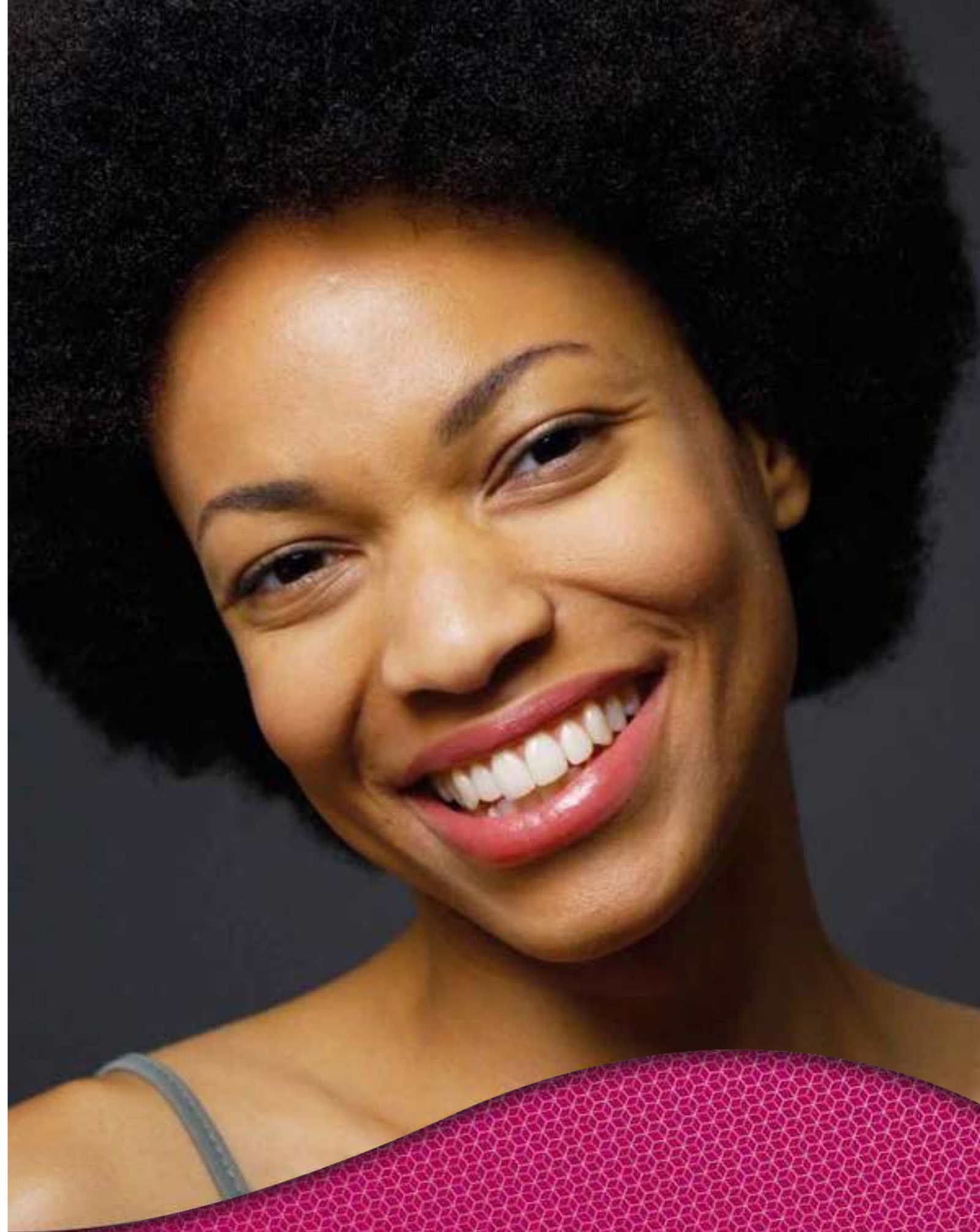
**Features:**

- Pickles palladiated alloys for resin. Effective at 40/50° C

**Packaging:** 300 g can

Code: DEC000013

Packaging may be subject to change without notice. The images are for illustration purposes only.



## MODELLING WAX

### MODELLING WAX

Extremely compatible with all the waxes of the line.  
Available in two hardness variants: REGULAR and HARD.

#### Features:

- It does not produce tension in the structure during modelling
- The addition of hot wax is performed extremely easily, without forming steps and union lines that are hard to eliminate
- Extremely short cooling time, thus reducing the work times
- Thanks to its stability, the regular wax can be used as cervical wax

**Packaging: 75 g box**

Codes:	CER110-2075	75g	beige	(HARD)
	CER110-3075	75g	grey	(HARD)
	CER110-4075	75g	blue	(HARD)
	CER120-2075	75g	beige	(REGULAR)
	CER120-3075	75g	grey	(REGULAR)
	CER120-4075	75g	blue	(REGULAR)

### HD (High Definition) MODELLING WAX

New state-of-the-art composition  
Extremely compatible with all the waxes of the line.

#### Features:

- It does not produce tension in the structure during modelling
- The addition of hot wax is performed extremely easily, without forming steps and union lines that are hard to eliminate
- Extremely short cooling time, thus reducing the work times
- Quick modelling with an extremely precise definition of details
- Ideal for all materials such as disilicates, pressed ceramics, etc.
- Excellent for modelling the crown anatomy
- Colour: light teal

**Packaging: 75 g box**

Code: CER100-7075

### YELLOW CERVICAL WAX

Free from tension and retraction, it is ideal to obtain a precise and stable marginal closure.  
As it is soft and not sticky, it enables simple and fast finishing, without compromising precision.

**Packaging: 75 g**

Code: CER140-6075

## TESTABLE WAX

CE

### ORAL CAVITY TESTABLE WAX

Indicated for the construction of a device entirely made of wax that is able to give a larger amount of useful information for the construction of the prosthesis, which – at the same time – is tested and made functional in the oral cavity.

#### Features:

- Made up of a mixture of waxes and resins
- Capacity to withstand the forces that are exerted in the patient's mouth during the test
- Useful on combined prosthesis works
- Colour: opaque white, A3

**Packaging: 75 g / 150 g box**

Codes:	CER130-B075	75 g	opaque white
	CER130-B150	150 g	opaque white
	CER130-A3075	75 g	A3
	CER130-BA3150	150 g	A3

### PINK FLANGE MODELLING WAX

The density of this wax enables fast modelling of gums.

#### Features:

- Extremely stable
- Free from retraction
- In the finishing of collars, the tooth will remain completely clean
- Excellent consistency for a quick removal of the material
- Pink

**Packaging: 500 g box**

Code: CER210-8500

### PALATE PINK WAX SHEETS

Wax for sheet modelling; it makes the removable prosthesis constructions perfect.

**Colour and packaging: pink - 500 g box**

Code: CER6500

## WAX PINK FLANGES

## SHEETS

Packaging may be subject to change without notice.  
The images are for illustration purposes only.



### BEIGE STICKY WAX

Wax to merge and fix both gypsum and resin. Not to be used for casting, as it produces residues during combustion.

#### Features:

- Fluid consistency to cool down extremely quickly
- Very strong and little fragile

**Colour and packaging:** beige - 150 g box

Code: CER180-2150



### WHOOPY WAX WIRES

Wire wax free from tension and elastic memory. Its high stability enables the easy fixing of the elements to be melted

*Diameter: 3 mm / 4 mm / 5 mm*

**Colour and packaging:** blue - 250 g box

Codes: CER743 3 mm  
 CER744 4 mm  
 CER745 5 mm



Casting canals are characterised by an extremely easy piece filling, while the canal shape enables perfect positioning in the cylinder.

With an initial calculation of the weight of buoys and the modelled piece, it is possible to compensate for the alloy contractions during cooling.

**Colour and packaging:**  
 blue - box containing 80 pieces / 90 pieces

Codes: CER190-0580 80 pcs. - 12 mm  
 CER190-0590 90 pcs. - 10 mm



### CASTING SPRUES

Sprues for direct casting, entirely made of wax with nourice, indicated for the individual casting of elements. Enables to have an alloy reserve with delayed cooling. The resulting casting will be free from porosity and particularly smooth.

*Diameter: 5 mm / 6 mm*

**Colour and packaging:** green - box containing 250 pieces

Codes: CER755 5 mm  
 CER756 6 mm  
 CER757 pear-shaped nourice sprues - 200 pcs.



### WHITE ASSEMBLY WAX

Its particular formula gives a soft consistency to the mixture, which makes teeth positioning easier.

#### Features:

- It is not sticky as a periphery wax
- It does not stain the tooth
- Thanks to its tenacity, you can mill teeth with the micromotor
- Assembly is completed only with this wax
- White

**Packaging:** 250 g box

Codes: CER220-6250



### STICKS FOR CASTING

Rigid sticks with round profile for the creation of stabilisation bars. With these sticks, the hinging work is made quicker, with the guarantee that when the wax model is removed there is no deformation.

*Diameter: 5 mm*

**Colour and packaging:** red - 250 g box

Code: CER7650

## BOXING WAX



Wax strips for impression boxing. Even though they are malleable and adhesive, they are very strong and remain in position even under the weight of gypsum.

**Colour and packaging:** red - box containing 25 pieces

Code: CER300-0025



Wax sticks with quadrangular profile, for impression boxing. Very malleable and adhesive.

**Colour and packaging:** red - box containing 36 pieces

Code: CER301-0036

## BITE WAX

HARD  
WAX  
FOR RIMS  
CE



Preformed curved wax rims for taking the bite in the oral cavity, with two hardness degrees.

**Features:**

- Flavoured

**Colour and packaging:**  
red and green - box containing 96 pieces

Codes: CER6131 red hard wax rims  
CER6121 green medium wax rims

OCCLUSAL  
WAX RIMS  
CE



**ORANGE OCCLUSAL WAX RIMS**

High adhesion to the support splints and extremely easy positioning. In order to better use the rims, immerse the splint in hot water before putting it into the mouth. Once it cools down, it will be stable and indeformable.

**ATTENTION:** If there have been errors while taking the high parts, just immerse the splint in hot water, recompact it and take the bite again.

**Colour and packaging:** orange - box containing 100 pieces

Code: CER200-9100 orange occlusal wax rims



## PREFORMED WAX RIM

Preformed wax rims for intermediate elements. **Packaging:** individual elements 20 pcs. / 25 pcs.

### "P" FORMAT PREFORMED WAX RIM

PREFP0001	<b>"P" LOWER FRONT</b> Completely castable hard wax; leaves no residue. Excellent modelling with deep cavities	Pcs. per pack: 25
PREFP0043	<b>"P" RH MANDIBULAR CANINE</b> Completely castable hard wax; leaves no residue. Excellent modelling with deep cavities	Pcs. per pack: 25
PREFP0044	<b>"P" RH MANDIBULAR FIRST PREMOLAR</b> Completely castable hard wax; leaves no residue. Excellent modelling with deep cavities	Pcs. per pack: 25
PREFP0045	<b>"P" RH MANDIBULAR SECOND PREMOLAR</b> Completely castable hard wax; leaves no residue. Excellent modelling with deep cavities	Pcs. per pack: 25
PREFP4647	<b>"P" RH MANDIBULAR MOLAR</b> Completely castable hard wax; leaves no residue. Excellent modelling with deep cavities	Pcs. per pack: 25
PREFP0033	<b>"P" LH MANDIBULAR CANINE</b> Completely castable hard wax; leaves no residue. Excellent modelling with deep cavities	Pcs. per pack: 25
PREFP0034	<b>"P" LH MANDIBULAR FIRST PREMOLAR</b> Completely castable hard wax; leaves no residue. Excellent modelling with deep cavities	Pcs. per pack: 25
PREFP0035	<b>"P" LH MANDIBULAR SECOND PREMOLAR</b> Completely castable hard wax; leaves no residue. Excellent modelling with deep cavities	Pcs. per pack: 25
PREFP3637	<b>"P" LH MANDIBULAR MOLAR</b> Completely castable hard wax; leaves no residue. Excellent modelling with deep cavities	Pcs. per pack: 25
REFP4005	<b>"P" MAXILLARY PREMOLAR</b> Completely castable hard wax; leaves no residue. Excellent modelling with deep cavities	Pcs. per pack: 25
PREFP0021	<b>"P" LH MAXILLARY CENTRAL INCISOR</b> Completely castable hard wax; leaves no residue. Excellent modelling with deep cavities	Pcs. per pack: 25
PREFP0022	<b>"P" LH MAXILLARY LATERAL INCISOR</b> Completely castable hard wax; leaves no residue. Excellent modelling with deep cavities	Pcs. per pack: 25

“P” FORMAT PREFORMED WAX RIM

PREFP0023	“P” LH MAXILLARY CANINE Completely castable hard wax; leaves no residue. Excellent modelling with deep cavities	Pcs. per pack: 25
PREFP2627	“P” LH MAXILLARY MOLAR Completely castable hard wax; leaves no residue. Excellent modelling with deep cavities	Pcs. per pack: 25
PREFP0011	“P” RH MAXILLARY CENTRAL INCISOR Completely castable hard wax; leaves no residue. Excellent modelling with deep cavities	Pcs. per pack: 25
PREFP0012	“P” RH MAXILLARY LATERAL INCISOR Completely castable hard wax; leaves no residue. Excellent modelling with deep cavities	Pcs. per pack: 25
PREFP0013	“P” RH MAXILLARY CANINE Completely castable hard wax; leaves no residue. Excellent modelling with deep cavities	Pcs. per pack: 25
PREFP1617	“P” RH MAXILLARY MOLAR Completely castable hard wax; leaves no residue. Excellent modelling with deep cavities	Pcs. per pack: 25



“G” FORMAT PREFORMED WAX RIM

PREFG0001	“G” LOWER FRONT Completely castable hard wax; leaves no residue. Excellent modelling with deep cavities	Pcs. per pack: 25
PREFG0043	“G” RH MANDIBULAR CANINE Completely castable hard wax; leaves no residue. Excellent modelling with deep cavities	Pcs. per pack: 25
PREFG0044	“G” RH MANDIBULAR FIRST PREMOLAR Completely castable hard wax; leaves no residue. Excellent modelling with deep cavities	Pcs. per pack: 25
PREFG0045	“G” RH MANDIBULAR SECOND PREMOLAR Completely castable hard wax; leaves no residue. Excellent modelling with deep cavities	Pcs. per pack: 25
PREFG4647	“G” RH MANDIBULAR MOLAR Completely castable hard wax; leaves no residue. Excellent modelling with deep cavities	Pcs. per pack: 25
PREFG0033	“G” LH MANDIBULAR CANINE Completely castable hard wax; leaves no residue. Excellent modelling with deep cavities	Pcs. per pack: 25
PREFG0034	“G” LH MANDIBULAR FIRST PREMOLAR Completely castable hard wax; leaves no residue. Excellent modelling with deep cavities	Pcs. per pack: 25
PREFG0035	“G” LH MANDIBULAR SECOND PREMOLAR Completely castable hard wax; leaves no residue. Excellent modelling with deep cavities	Pcs. per pack: 25
PREFG3637	“G” LH MANDIBULAR MOLAR Completely castable hard wax; leaves no residue. Excellent modelling with deep cavities	Pcs. per pack: 25
PREFG4005	“G” MAXILLARY PREMOLAR Completely castable hard wax; leaves no residue. Excellent modelling with deep cavities	Pcs. per pack: 25



## "G" FORMAT PREFORMED WAX RIM

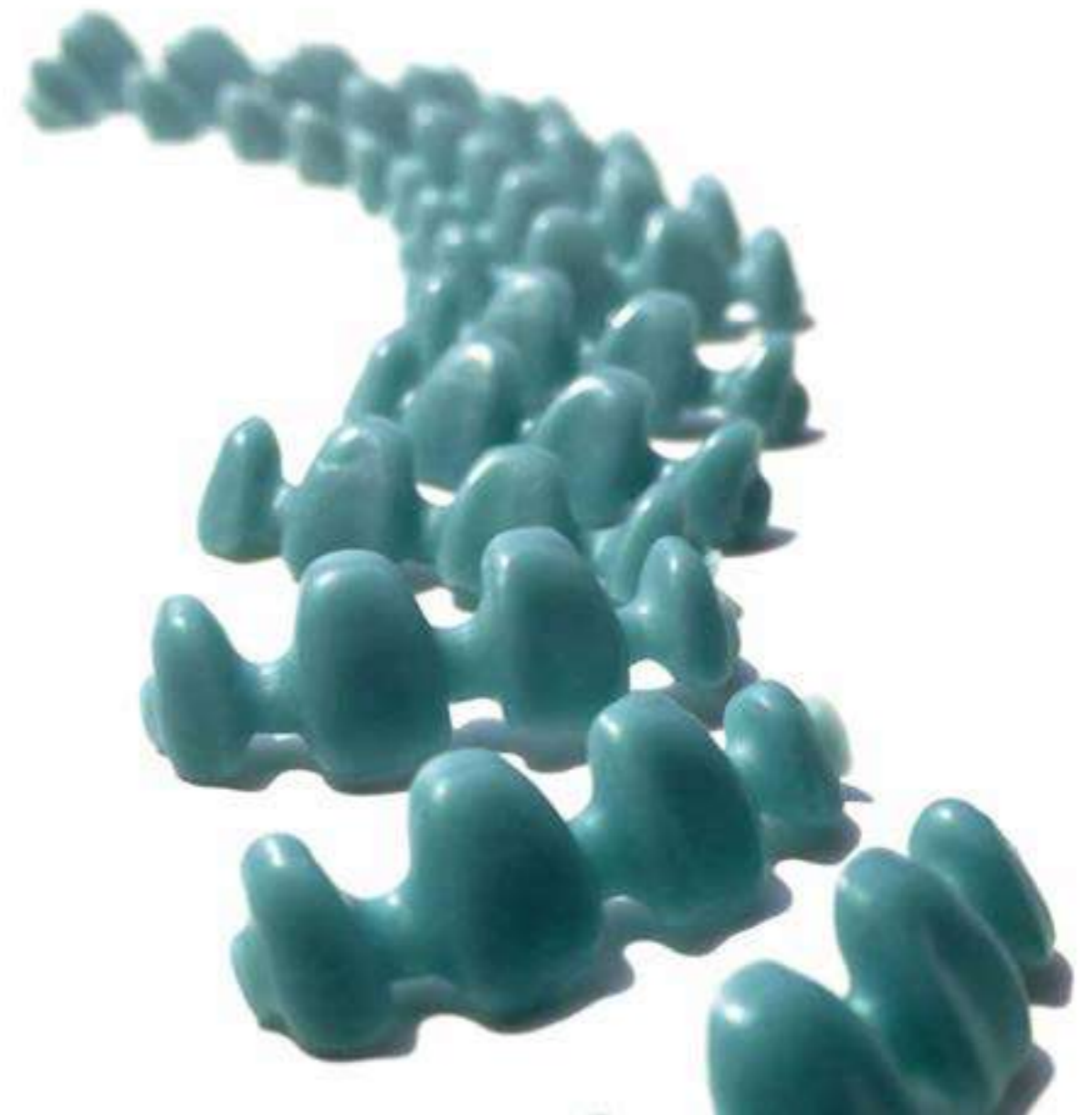
PREFG0021	"G" LH MAXILLARY CENTRAL INCISOR Completely castable hard wax; leaves no residue. Excellent modelling with deep cavities	Pcs. per pack: 25
PREFG0022	"G" LH MAXILLARY LATERAL INCISOR Completely castable hard wax; leaves no residue. Excellent modelling with deep cavities	Pcs. per pack: 25
PREFG0023	"G" LH MAXILLARY CANINE Completely castable hard wax; leaves no residue. Excellent modelling with deep cavities	Pcs. per pack: 25
PREFG2627	"G" LH MAXILLARY MOLAR Completely castable hard wax; leaves no residue. Excellent modelling with deep cavities	Pcs. per pack: 25
PREFG0011	"G" RH MAXILLARY CENTRAL INCISOR Completely castable hard wax; leaves no residue. Excellent modelling with deep cavities	Pcs. per pack: 25
PREFG0012	"G" RH UPPER FRONT Completely castable hard wax; leaves no residue. Excellent modelling with deep cavities	Pcs. per pack: 25
PREFG0013	"G" RH MAXILLARY CANINE Completely castable hard wax; leaves no residue. Excellent modelling with deep cavities	Pcs. per pack: 25
PREFG1617	"G" RH MAXILLARY MOLAR Completely castable hard wax; leaves no residue. Excellent modelling with deep cavities	Pcs. per pack: 25

## "GROUP - P" FORMAT PREFORMED WAX RIM

PREFP1222	"P" UPPER FRONT GROUP Completely castable hard wax; leaves no residue. Excellent modelling with deep cavities	Pcs. per pack: 20
PREFP3242	"P" LOWER FRONT GROUP Completely castable hard wax; leaves no residue. Excellent modelling with deep cavities	Pcs. per pack: 20
PREFP1417	"P" RH MAXILLARY MOLAR GROUP Completely castable hard wax; leaves no residue. Excellent modelling with deep cavities	Pcs. per pack: 20
PREFP2427	"P" LH MAXILLARY MOLAR GROUP Completely castable hard wax; leaves no residue. Excellent modelling with deep cavities	Pcs. per pack: 20
PREFP4447	"P" RH MANDIBULAR MOLAR GROUP Completely castable hard wax; leaves no residue. Excellent modelling with deep cavities	Pcs. per pack: 20
PREFP3437	"P" LH MANDIBULAR MOLAR GROUP Completely castable hard wax; leaves no residue. Excellent modelling with deep cavities	Pcs. per pack: 20

## "GROUP - G" FORMAT PREFORMED WAX RIM

PREFG1222	"G" UPPER FRONT GROUP Completely castable hard wax; leaves no residue. Excellent modelling with deep cavities	Pcs. per pack: 20
PREFG3242	"G" LOWER FRONT GROUP Completely castable hard wax; leaves no residue. Excellent modelling with deep cavities	Pcs. per pack: 20
PREFG1417	"G" RH MAXILLARY MOLAR GROUP Completely castable hard wax; leaves no residue. Excellent modelling with deep cavities	Pcs. per pack: 20
PREFG2427	"G" LH MAXILLARY MOLAR GROUP Completely castable hard wax; leaves no residue. Excellent modelling with deep cavities	Pcs. per pack: 20
PREFG4447	"G" RH MANDIBULAR MOLAR GROUP Completely castable hard wax; leaves no residue. Excellent modelling with deep cavities	Pcs. per pack: 20
PREFG3437	"G" LH MANDIBULAR MOLAR GROUP Completely castable hard wax; leaves no residue. Excellent modelling with deep cavities	Pcs. per pack: 20





## S.T.18 SPRAY



Contact point detector spray. To be applied to metals or gypsum.

**Features:**

- Ideal for the inside of crowns and for the adjustment of attachments
- Easy dosage in the desired points
- It is removed with a jet of steam or water

**Packaging:** 75 ml spray

**Code:** VAR00005

## OPAQUE SPRAY NEW



Makes the surface opaque, facilitating reading by scanning systems.

**Packaging:** 75 ml spray

**Code:** VAR000285

## DUMBORS



Wax tension reducer; increases the smoothness of the moulded wax coating.  
Reduces the risk of micro-bubbles on melting.

**Packaging:** 125 ml spray

**Code:** VAR000080

## SPINFLEX



Sprayed on the surface of the silicone material it reduces surface tension and increases fluidity of water-based materials (gypsum and investments).

**Features:**

- Does not affect dimensions
- Eliminates the risk of bubbles
- Indispensable for accurate detail reproduction

**Packaging:** 125 ml spray

**Code:** VAR000081

## CERTIX



Certix is a universal mixing system for all types of ceramics. Certix is applied to numerous restorations and complex corrective firings both as a ceramic paste humidifier and a modelling fluid to prolong the processing time of mixed stratification ceramics.

**Features:**

- Easy to work with
- Does not require drying during stratification
- Does not alter the colour
- Maintains the humidity of any ceramic
- The paste applied to the reinforcement does not dry quickly, becoming plastic and allowing a more targeted and precise modelling of the item.
- Shake before use

**Packaging:** 250 ml + 100 ml free

**Code:** VAR000038

## DURCI STONE



Lacquer to seal and strengthen the edges of the gypsum die.

**Features:**

- Transparent
- No thickness
- Leaves the die surface harder and smoother
- Water repellent
- Package including dosing brush

**Packaging:** 15 ml bottle

**Code:** VAR000122 15 ml

## POLIX



Refined pumice powder suitable for sanding and surface cleaning in various fields of application. In the dental industry, the softer abrasive power of pumice compared to corundum/ aluminium oxide makes it ideal for cleaning and polishing tooth enamel and for finishing removable prostheses.

**Features:**

- Thanks to its particular grain size (micronised), it allows an optimal and constant degree of polishing of acrylic resins
- Natural, controlled grain size pumice
- Extrafine pumice
- Ideal for all uses

**Packaging:** 10 kg

**Codes:** VAR0000025

Packaging may  
be subject to change  
without notice.  
The images are for  
illustration purposes only.





Techim Group srl: Via Monte Grappa, 32 - 20044 Arese, Milan, Italy +39 02 93581452

[www.techingroup.com](http://www.techingroup.com)